



Real People. Real Solutions.

Northridge & Westridge Drive Improvements Construction Newsletter

May 19, 2023

Construction:

- Street Resurfacing

Construction schedule:

Northridge and Westridge Drive:
Curb Removal began May 8
Surface Reclaiming begins May 24

City of Jackson

80 West Ashley Street
Jackson, MN 56143
Matt Skaret, City Administrator
Phone (507) 847-4410
mskaret@cityofjacksonmn.com

Bolton & Menk, Inc.

1501 South State Street, Suite 100
Fairmont, MN 56031
Phone: (507) 238-4738
Fax: (507) 238-4732
www.bolton-menk.com

Troy Nemmers, P.E.

Project Manager
Cell: (507) 236-9832
E-mail: troy.nemmers@bolton-menk.com

Dustin Meyer

Construction Representative
Cell Phone: (507) 432-8103
E-mail: dustin.meyer@bolton-menk.com

Duininck, Inc.

408 6th Street
Prinsburg, MN 56281

Overview

As you know, the City of Jackson is undertaking construction projects to improve the city streets at a number of locations. This project includes new asphalt surfacing and spot repairs to curb and gutter on Westridge and Northridge Drive. Competitive bids for the work were received on June 17, 2022, and the project was awarded to Duinick, Inc. from Prinsburg, Minnesota on June 21, 2022. In addition to their own staff, Duinick will employ several subcontractors for the project.

Newsletters like this one are sent out during certain milestones of the project to help keep residents informed. It is important to note that information and scheduling might change due to weather and unforeseen issues. We will do our best to keep you up to date with the construction progress and changes. Bolton & Menk, Inc. is the City's engineer for the project. They will act as an extension of City Staff in monitoring construction work and interacting with the contractor daily. Should any questions or concerns arise during the construction process, please contact Bolton & Menk's representatives listed on the lower left side.

Project Timeline

On Westridge and Northridge Drive spot locations of curb replacements are underway. Reclaiming of the asphalt surface is anticipated to be completed on May 24. The reclaiming of the surface will involve grinding the existing pavement and reinstalling the crushed material as a base for temporary access and as a new base for the new asphalt pavement. New pavement installation is intended to be completed within 2 weeks of the pavement removals.

Contacts

If you have questions or concerns at any time, please contact the Construction Representative, Dustin Meyer, at the phone number or email address listed.

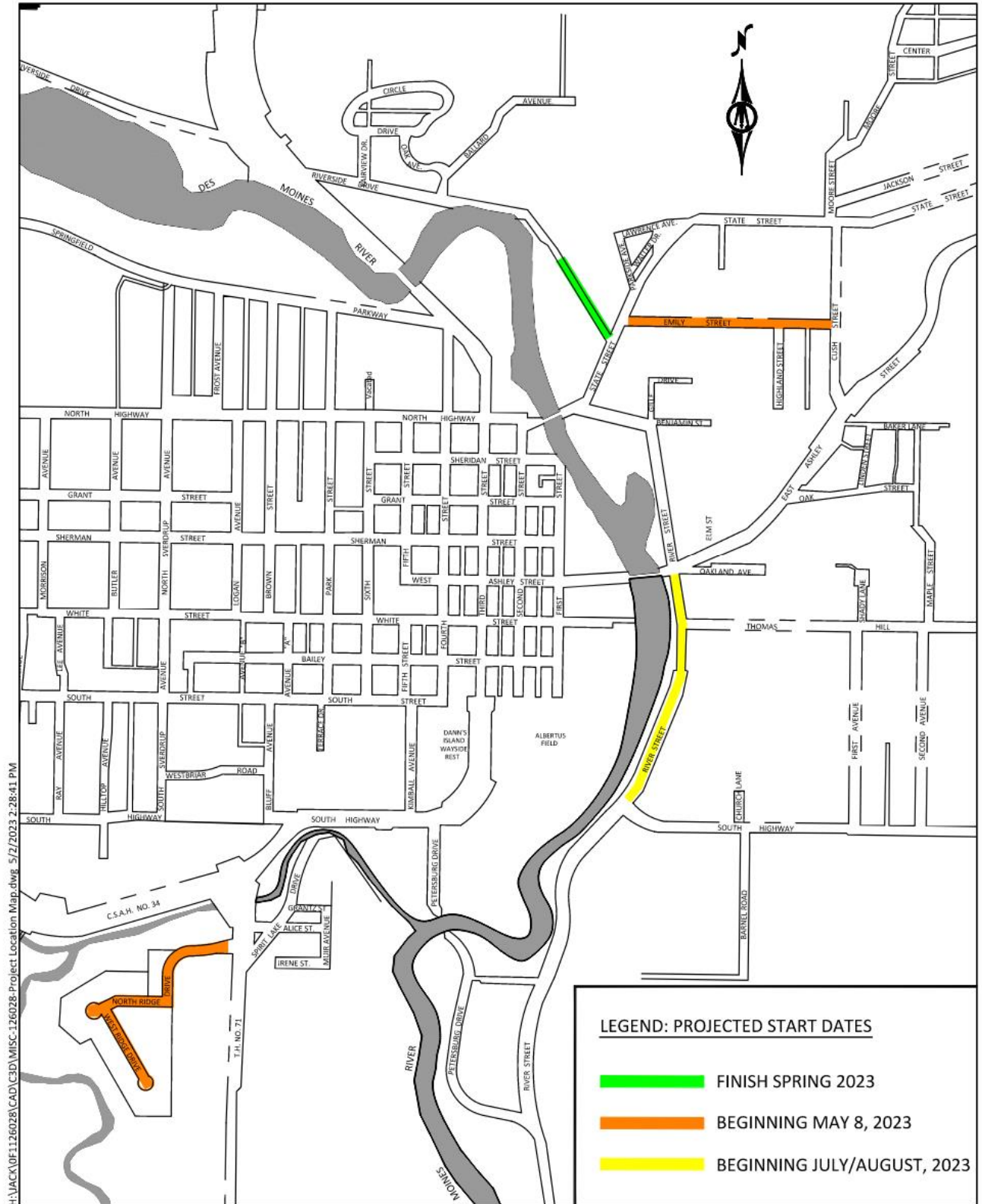


2022 Street & Utility Improvements

City of Jackson

Figure 1: Project Location

May 2023





Alert

Private Improvements in Right-of-Way

If you have improvements such as landscaping, retaining walls, shrubs, bushes, flowers, sheds, irrigation systems, etc. in the right-of-way, they may be impacted by the curb replacement. Neither the contractor nor City is responsible for damages incurred to private improvements in the right-of-way. Any underground improvements, such as irrigation lines and heads, dog fences, etc., should be located and marked so they are readily visible.

Access & Parking

As the project moves forward, parking and access to your property will continue to change. During the pavement reclaiming process, access to your driveway may be restricted when the equipment is on the street near your home. Pavement reclaiming will likely take a day or two to complete. After pavement reclaiming the material will be compacted and should allow access to your driveways. It is likely that there will be a 3-inch lip to drive over to access your driveway. Please use caution when driving over this lip. When pavement operations begin the street will be very congested and full access to the street will be limited. The Contractor will coordinate access for residents during this time. Shortly after paving operations are completed the street will be opened for full access. Rain will also have an impact on property access and the contractor will monitor conditions following rain events. We realize access will be limited and thank you for your patience.



Construction

Work Area

It is very common on these types of projects that area residents (especially children) become quite curious about the work the Contractor is performing. We ask that you please be respectful of and stay well clear of construction zones. Many hazards and dangers exist from heavy machinery, loose material, hot asphalt, etc. and oftentimes are not recognizable by the general public. The Contractor has the responsibility to ensure safety on the project and within the construction area. Any direction from the Contractor regarding safety must be heeded; likewise, if you observe an unsafe condition, please report it to the Construction Representative immediately.

Garbage & Mail Delivery

It is not anticipated that these two services will be interrupted for any extended period. The contractor is responsible for coordinating access for these services. You will be notified if other arrangements are necessary.

Turf Restoration

Sodded areas will be maintained by the contractor for 30 days following placement. After that, you will be responsible for maintaining it as part of your own lawn (providing water, mowing, and other necessary care). Efficient watering practices are important to conserve water and maintain healthy turf. New seed roots take up to a year to reach full length and require at least 2 inches of water per week in three or four applications. When it rains watering reductions are appropriate.

To ensure successful turf establishment it is also important not to mow the grass too short. The first few times you mow, set the mower deck at least 3 inches high or at the highest setting. Do not cut more than half the plant off at a time. It is important to use caution when mowing the grass for the first growing season after placement and remember it is better to have long green grass than short brown grass and dirt.

Punch List

After the project is substantially complete, the contractor will be provided with a "punch list" of minor defects or uncompleted tasks. That work may take several weeks to complete and may even be in the following spring. This punch list work will require both your cooperation and patience. Please contact the Construction Representative for any issues you feel have not been satisfactorily addressed.